

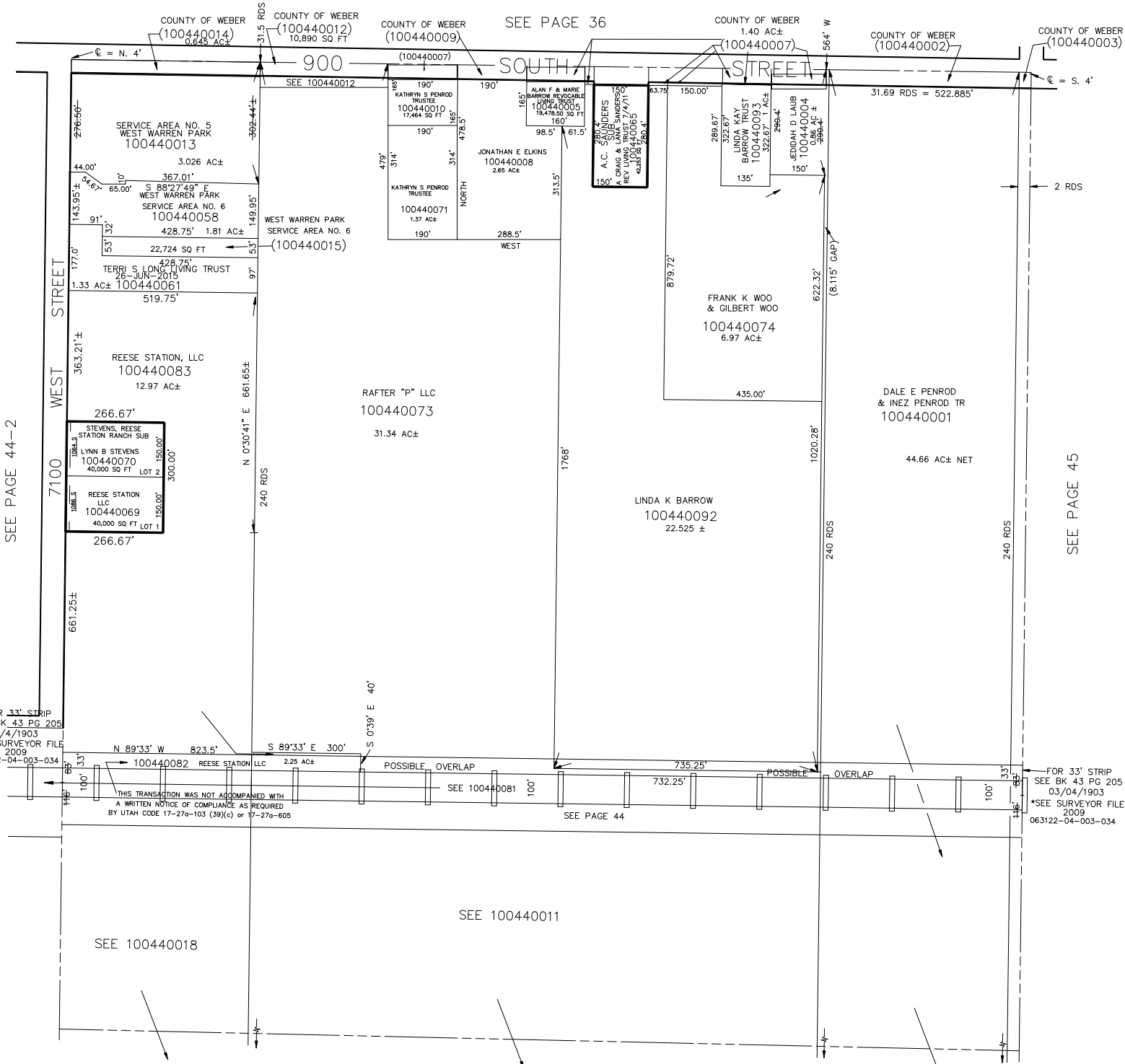
TAXING UNITS: 303

N.E. 1/4  
SECTION 23, T.6N., R.3W., S.L.B.& M.

IN WEBER COUNTY

SCALE 1" = 200'

SEE PAGE 36



SEE PAGE 44-2

SEE PAGE 45

FOR 33' STRIP  
SEE BK 43 PG 205  
3/4/1903  
\*SEE SURVEYOR FILE  
2009  
063122-04-003-034

FOR 33' STRIP  
SEE BK 43 PG 205  
03/04/1903  
\*SEE SURVEYOR FILE  
2009  
063122-04-003-034